



For more project ideas:
visit stampbord.com
call or write to
1500 E. 4th Street
Austin, TX 78702
800.822.1939

Featured How-to May 2008

Designer: Carol Heppner

Stampbord Floral Key Chain



List of Materials:

- Stampbord™ ATC
- Stampbord™ Scratch Knife
- All-purpose white glue
- Crystal gems
- Key chain ring
- Large jump ring
- Low-tack masking tape
- Photograph copy
- Clamp
- Dremel and drill bits (largest bit) or Crop-A-Dile™
- Razor blade
- Safety glasses
- Scrap wood
- Jewelry pliers
- Rubber gloves
- Rubber stamps
- Sealer
- Golf-ball size of polyester fiberfill



Stampbord Featured How-to

May 2008

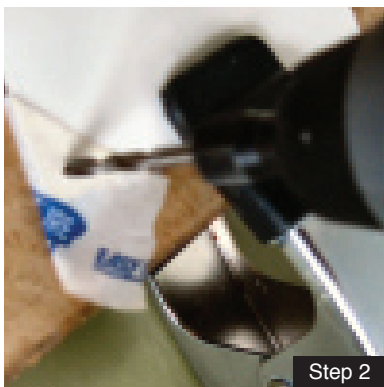
Designer: Carol Heppner

Stampbord Floral Key Chain

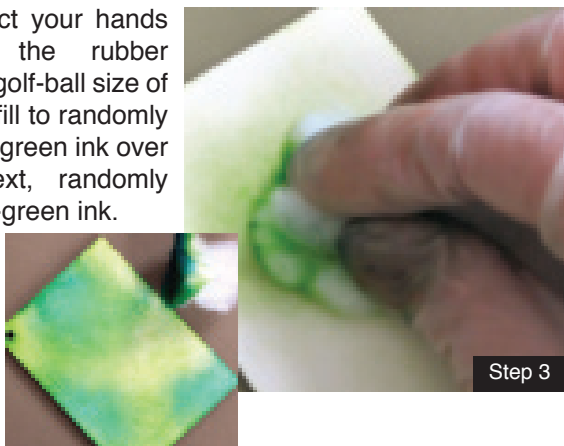
Step 1: Put a piece of low-tack masking tape over the upper-left corner of the Stampbord ATC. Decide where you will drill your hole. Twist the tip of the razor over this spot. This will create a small impression for your drill bit to sit.



Step 2: Clamp the Stampbord ATC onto the scrap wood. Drill the hole where you made the initial impression. Unclamp the Stampbord ATC and remove the tape. If you have a Crop-A-Dile™, this would also work to make a hole.



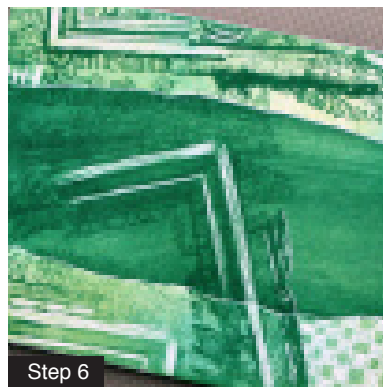
Step 3: Protect your hands by wearing the rubber gloves. Use a golf-ball size of polyester fiberfill to randomly apply the light-green ink over the ATC. Next, randomly apply medium-green ink.



Step 4: Tear a piece of tape in half and place it horizontally onto the ATC. Make sure the torn edge is facing the center of the ATC.



Step 5: Apply a heavier coat of medium-green ink over the exposed areas of the ATC. Remove the tape. Use the same medium-green ink to randomly stamp your design onto the ATC. When finished using the inks, you can remove the rubber gloves.



Step 6: Use the Stampbord Scratch Knife to etch your design onto the ATC.

Step 7: Glue the photograph copy to the ATC. Then use your favorite sealer to protect the ATC. Let the sealer dry. Glue the crystal gems onto the ATC along the photo's edge.



Step 7: Glue the photograph copy to the ATC. Then use your favorite sealer to protect the ATC. Let the sealer dry. Glue the crystal gems onto the ATC along the photo's edge.

Step 8: Place the jump ring in the hole of the ATC and place the jump ring onto the key chain. Now you have a fabulous key chain that will stand out in a crowd.

