



For more project ideas:

visit stampbord.com

call or write to

1500 E. 4th Street

Austin, TX 78702

800.822.1939

Featured How-to September 2007

Designer: Cathy Arenzana

Stampbord Halloween Wine Glass Charmers



List of Materials:

- 6 - 1" x 1" Stampbord™ Tiles
- Stampbord™ Oil-Free Steel Wool
- Adirondack® Alcohol Inks & Blending Solution
- Alcohol ink applicator & felt
- Grumbacher Miskit™
- PrismaColor® Colored Pencils and Colorless Blender
- JudiKins MicroGlaze™
- We R Memory Keepers™ Crop-A-Dile™
- Stamps by Peddler's Pack and Rosie's Roadshow®
- Tsukineko® Brilliance Graphite Black ink pad
- 6 - silver earring hoops
- 6 - 9mm silver jump rings
- 6 - silver eyelets
- Variety of seed beads, beads, and jewelry spacers
- Hemostats and/or pliers
- Small & medium paint brush
- Heat gun



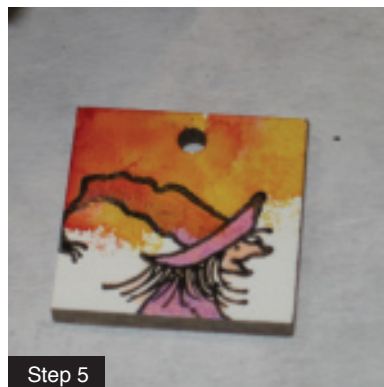
Stampbord Featured How-to

September 2007

Designer: Cathy Arenzana

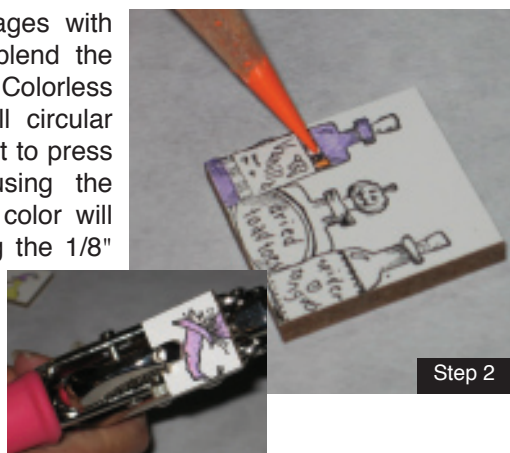
Stampbord Halloween Wine Glass Charmers

Step 1: Lightly sand the Stampbord tiles with steel wool. This creates a “toothy” surface ideal for colored pencils. Stamp images using black ink; heat set to ensure a smudge-proof image. Place the inked stamp upside down and place the Stampbord on a specific area of the image and press firmly. Carefully lift the tile straight up.



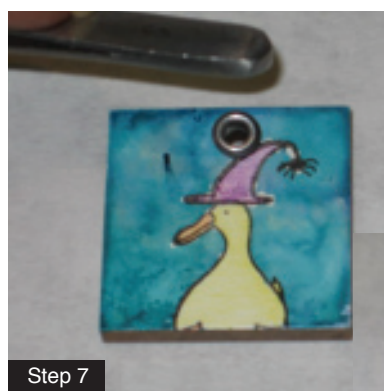
Step 5: Attach a clean piece of felt to applicator. Apply small amount of Pearl Metallic Mixative, Butterscotch and Terra Cotta Alcohol inks to felt. Dab ink on Frog, Witch and Potion Bottles tiles. Set aside to dry. When alcohol ink is dry, gently rub off the masking fluid.

Step 2: Color images with color pencils. To blend the colors, use the Colorless Blender in a small circular motion. Be sure not to press too hard while using the Blender, as some color will be removed. Using the 1/8" side of the Crop-A-Dile, punch a hole at the top of the tile.



Step 6: Using the medium paintbrush, apply MicroGlaze to the top, sides, and back of all tiles. Use a paper towel to wipe off excess. Applying MicroGlaze will make the charms waterproof.

Step 3: Using a small paintbrush, dab Miskit masking fluid over the stamped and colored image on each tile, leaving the white areas unmasked. Allow Miskit to dry.



Step 7: Insert silver eyelets. No setting is necessary, as the eyelets fit snugly in the punched hole. Attach jump rings to each tile. Attach a silver hoop earring with decorative beads to the jump ring of each tile.

Step 4: Attach felt to Alcohol Ink Applicator. Apply small amount of Pearl Metallic Mixative, Stonewashed & Stream Alcohol inks to felt. Dab ink on Ghost, Bat and Duck tiles. If the ink is too pearlized or too dark, apply Alcohol Ink Blending solution to the felt and dab the tiles again. Set aside to dry.



Step 8: Using hemostats, grasp straight end of hoop earring and bend to a 90° angle. Attach to wine glass stem and close clasp. You know have fun wine glass charmers for your next Halloween party!

Step 12 Bead Patterns - Add beads and tiles to silver hoop earrings in the following pattern for each tile:

- Seed Bead
- Spacer
- Seed Bead
- Big Bead
- Seed Bead
- Spacer
- Stampbord Tile
- Spacer
- Seed Bead
- Big Bead
- Seed Bead
- Spacer
- Seed Bead