



For more project ideas:
visit stampbord.com
call or write to
1500 E. 4th Street
Austin, TX 78702
800.822.1939

Featured How-to November 2007

Designer: Cheryl Darrow

Stampbord Ornaments



List of Materials:

- Assorted sizes of Stampbord™
- Stampbord™ Scratch Knife
- Crop-A-Dile™ by We R Memory Keepers™
- Leg Charms by ArtGirlz
- EK Calligraphy Pen (Black)
- E-6000® adhesive
- Glimmer Mist by My Tattered Angels
- Stamp by Sunday International
- Alcohol ink and applicator
- Beads, Wire, Ribbon and Charms etc.
- Scissors
- Wire Cutters and Needle Nose Pliers

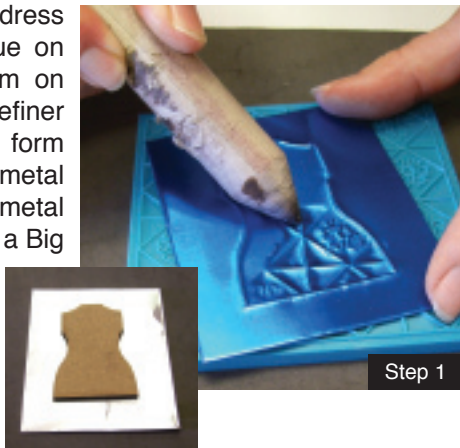
Ten Seconds Studio's Tools:

- Dress form Convertible (Masonite)
- CD patterns on "The A to Z of METALworks"
- Metal (38g Art Metal)
- Killer Adhesive Sheet
- Refiner Tool
- Paper Stump
- Big Momma Mold #01
- Burnishing Block
- rub-ons



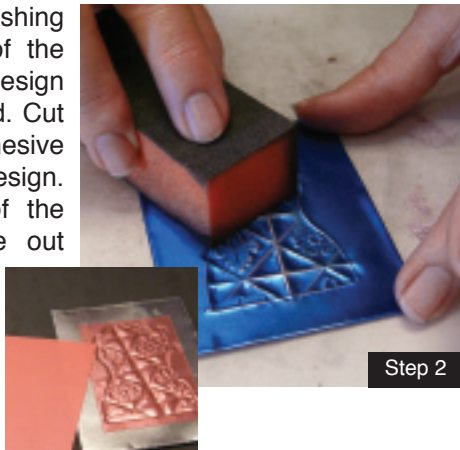
Stampbord Featured How-to
November 2007
Designer: Cheryl Darrow
Stampbord Ornaments

Step 1: Cut metal for dress form. This metal is blue on one side and aluminum on the other. Using the refiner tool, trace the dress form on the backside of the metal (aluminum side). Place metal (blue side up) on top of a Big Momma Mold and rub with the paper stump. This will emboss the image on the metal.



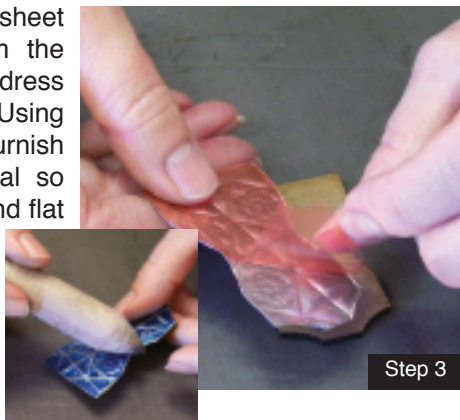
Step 1

Step 2: Using the burnishing block, sand the top of the metal. This allows the design to be more pronounced. Cut a piece of Killer adhesive to cover the entire design. Attach to the back of the metal. Cut the image out along the line drawn in Step 1. This allows the metal and adhesive to be flush for perfect adhesion.



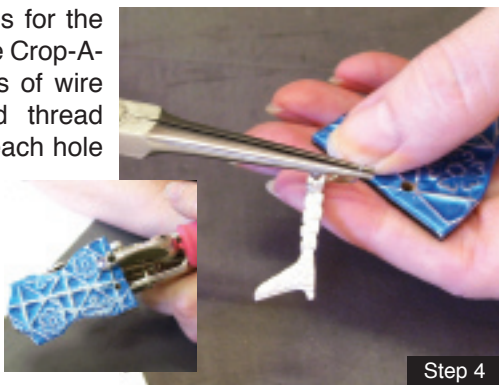
Step 2

Step 3: Remove the sheet of protective film from the adhesive and line up the dress form on the metal. Using the paper stump, burnish the edges of the metal so everything is smooth and flat on the dress form.

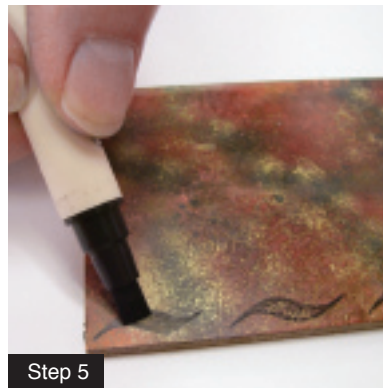


Step 3

Step 4: Punch holes for the leg charms using the Crop-A-Dile. Cut two pieces of wire about 3" long and thread one piece through each hole and attach the leg charm. You can bunch up the wire when wrapping to give it character.



Step 4



Step 5

Step 5: Take one of the Stampbord pieces and apply alcohol ink to it. These can then be stamped or written on. Use a calligraphy pen and make swirl marks along the side of the Stampbord rectangle to decorate the edge.



Step 6

Step 6: Then use the Scratch Knife to scratch out the swirl marks so they are now white instead of black. Apply a dot of E-6000 adhesive to the crown charm and attach it to the Stampbord. Also apply some to the back of the dress form and attach it under the crown. Let dry.



Step 7

Step 7: For an ornament, attach decorative ribbon to the back. Or, this can be the front of a card or book.

Circle: 2"x2" round Stampbord piece with metal and small beads outlining the design. Glimmer Mist by My Tattered Angels was sprayed for color.

Joy: 3.5"x5" Stampbord was alcohol inked and then stamped with a diamond design. Metal design is from the CD patterns on "The A to Z of METALworks" from Ten Seconds Studio.

Fleur de lis: 2"x2" Stampbord was alcohol inked and then rimmed with the black calligraphy pen. Glimmer Mist was sprayed on the Fleur de lis and then topped with a rub-on.

Noel: 3.5"x3.5" Stampbord was sprayed with Glimmer Mist and dried with a heat gun. This creates a swirly effect. Corners were stamped with Sunday International photo corner. The swirl is a rub-on and Noel was written and then scratched off.